

ALARM VALVE AND DELUGE VALVE

ALARM VALVE

Safex Alarm Valve are designed to confirm to International Standard. It is highly anti-corrosive are made of cast bronze. The Alarm Valve is divided into paddle type, retard chamber type, alarm switch type and groove type depending on the condition of use.

Specification

Model No.	FAVB 100R - UL	FAVB 150R - UL
Size	100NB	150NB
Approved Standards	UL and FM	UL and FM
Max, Flow	175 PSI	175 PSI
Test Pressure	350 PSI	350 PSI
Direction	Vertical	Vertical
Flange	ANSI 150lb FF Type	ANSI 150lb FF Type
Weight (Kg)	35	53.7
Packing (Ea)	1	1

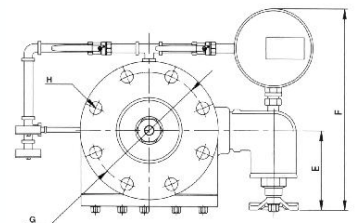
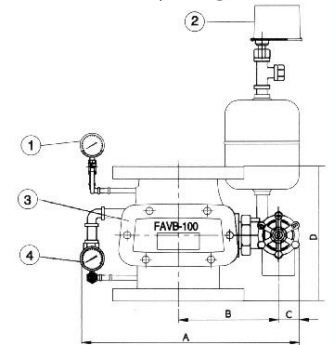
Dimension

Model No. Size	A	B	C	D	E	F	G	H
FAVB 100R UL & FM	394	169	50	250	153	353	190.5	8-ø19
FAVB 150R UL & FM	459	199	50	280	153	378	241.5	8-ø23

Part List

No.	Part	Material	Qty.
1	Alarm Valve Body	FC200	1
2	Pressure Switch	AC125/250	1
3	Pressure Gauge (Outlet)		1
4	Pressure Gauge (Inlet)		1

Assembly Diagram



FAVB 100(150)R-UL



DELUGE VALVE

Safex Deluge Valve are designed to minimize the friction loss inside and inner parts such as clapper are made of cast bronze to offer excellent corrosion and pressure resistance.

Specification

Model No.	PPD 100	PPD 150
Size	100NB	150NB
Approved Standards	UL and FM	UL and FM
Max, Flow	175 PSI	175 PSI
Test Pressure	350 PSI	350 PSI
Pressure Loss	0.02MPa	0.02MPa
Direction	Vertical	Vertical
Flange Size	ANSI 150lb FF Type	ANSI 150lb FF Type
Weight (Kg)	59	79
Packing (Ea)	1	1

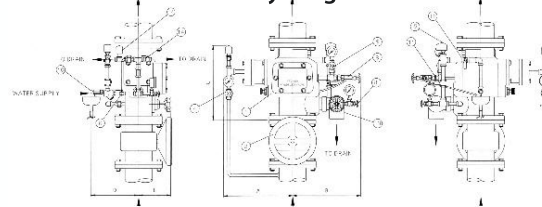
Dimension

Model No.	PPD 100	PPD 150
A	242	259
B	260	285
C	367	372
D	270	290
E	150	150

Part List

No.	Part	No.	Part
1	Pre-Action Valve	1	Pressure Valve (Inlet)
2	OS & Y Valve	2	Pressure Valve (Outlet)
3	Air control Valve	3	Drip Check Valve
4	Pressure Gauge (Setting)	4	Pressure Switch Test Valve
5	Pressure Switch	5	Ball Valve
6	Actuating Unit Water Supply Valve	6	Drain Valve
7	Solenid Valve	7	Emergency Relrase Valve

Assembly Diagram



PPD 100(150)-UL



HYDRANT ACCESSORIES

HOSE BOX

Material: MS / SS / FRP
Thickness: 16 Gauge, 18 Gauge
Single door: 560W x 560L x 250D
Double door: 600W x 750L x 250D
*Customized Sizes are Available



HOSE REEL AS PER INDIAN STANDARDS

1. Hub
2. Two Sides
3. Swivel Joint
4. Pips with fittings
5. Wall Bracket
6. Nozzle with shut off arrangement
7. Stop Valve
8. Rubber / Thermoplast Hose
9. Variants : 20 mtr, 30 mtr, 36 mtr, 36.5 mtr and 40 mtr



LANDING VALVE / INTERNAL HYDRANT



IS:5290

STAINLESS STEEL

Performance	Type A Single	Type B Single
Water tightness test	14 kgF/ cm ²	14 kgf/ cm ²
Hydrostatic pressure test	21 kgF/ cm ²	21 kgF/ cm ²
Flow test per minute	900 Litter at 7 kgF/ cm ²	1800 Litter at 7 kgF/ cm ²

GUNMETAL

Dimension	Type A Single	Type B Single
Flange Inlet	75 mm	100 mm
Female Outlet	63 mm	63 mm
Flange Dis	200 mm	220 mm

DELIVERY HOSE COUPLING

MOC : STAINLESS STEEL/GUNMETAL

Size & Dimension:
63 mm

Hydrostatic Pressure
Test: 21kgF/cm² for a
period of 2 ½ minutes.



IS:903

NOZZLES / BRANCH PIPE

MOC : STAINLESS STEEL/GUNMETAL

Washer-IS 937 Type B
Hydrostatic Pressure Test:
21kgF/cm²



IS:903

FEATURES OF HOSE REEL

- Side Plate powder painted finish red
- Threaded Inlet connection
- Outlet connection for hose can be rotated for left and right direction
- Waterways made from non ferrous metals which ensure corrosion free*
- Maximum working pressure 15Bar, test pressure 20Bar
- PVC Hose
- Available in 20 mtr, 30 mtr, 36 mtr, 40 mtr

HOSE REEL AS PER INTERNATIONAL STANDARDS

Sr. no. Description

1. Side plates &
2. Water way
3. Pipe spec.
4. Nozzle
5. Swivel
6. Working pressure
7. Test Pressure

Brief Specifications

High quality mild steel perfectly shaped PE Powder coated.
Aluminum Alloy & GI coated steel against corrosion duly EPE powder coated
High quality PVC Pipe of Diameter 3/4" and length 20, 30, 36, 40 mtr. the customer requirements.
Jet, Spray & Shut off Nozzle in PVC / Brass
180° double swivel
12 Bar (174 psi)
18 Bar (261 psi)

